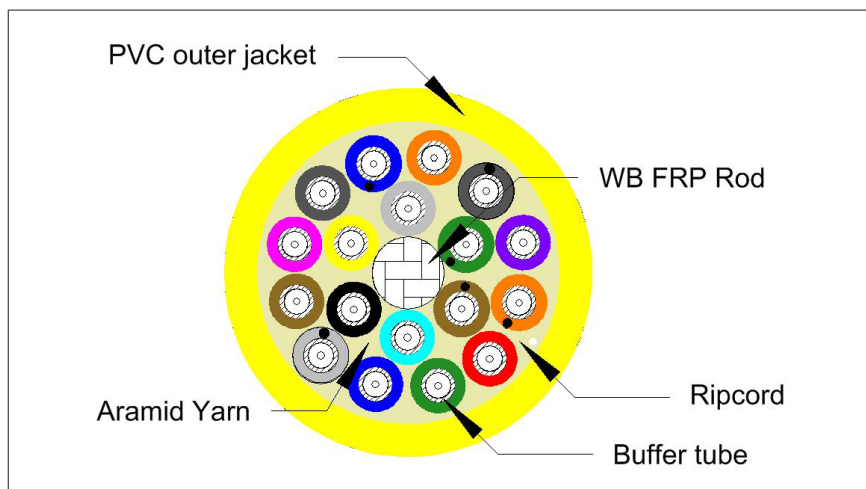


# Connections

CONNECTING THE NEXT GENERATION

*Keeping You In The Loop - October 2020*

## TLC Continues to Expand Its Product Offerings!



**Another product added to the TLC portfolio in 2020 is 18 fiber Riser Breakout Cable.**

The previous fiber count was 12. Combining strength, flexibility and no need for fan-out kits or tubing when termination, this rugged cable is ideal for indoor and indoor/outdoor applications. This product development was a direct response to customer demand and TLC is extremely pleased to offer this solution.

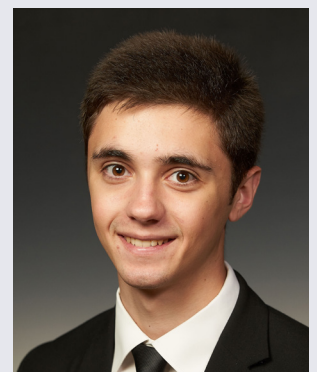


*During the global pandemic, TLC is taking any/all precautions necessary to keep our employees safe. Being a manufacturer of critical telecommunication products, TLC has been deemed as an "essential" business and is presently open and 100% operational.*

## Ask Engineering

### *The TLC Team Continues to Grow!*

*The Light Connection, Inc. proudly welcomes Sean Gwilt to the Engineering Team as a Process Engineer. This is an integral role within the Company, where daily functions include assisting Manufacturing, Quality and Sales. The Engineering Team works daily with Customers to provide custom solutions in a timely manner. Sean has a Bachelor's of Science in Mechanical Engineering from Syracuse University. Sean's roots are in Central New York near TLC's Manufacturing Facility. His wealth of knowledge and extensive course load will prove valuable to TLC and our customers' success both now and for years to come.*



**Sean Gwilt**  
TLC Process Engineer